

If Bends have to Adapt Themselves ...

## KALFLEX Bends are Both Flexible and Wear-Resistant

The problem is well known. Structural components move due to vibrations, temperature changes or as a result of intended movements. Rigid pipe systems cannot be used. Special solutions are expensive.

Kalenborn offer the right solution for that problem as well: KALFLEX - the flexible bend that is mounted to the connecting flange without any difficulty.

The core element of the system are abrasion-resistant KALMETALL segments which fit into each other and which are capable to take different angular positions relative to each other.

The system is enclosed by a rubber jacket with a fabric insert which warrants adequate stability and tightness.

Nominal widths from 19 to 150 mm mean that a complete program is offered, especially for pneumatic conveying systems.

The new system allows any type of flange and coupling connection to be used. This ensures rapid and easy installation in any existing plant.

### Technical data:

- nominal widths  
19 - 150 mm
- max. temperature 180°C
- pressures up to approx. 10 bar
- flexible radius and angle positions

### Advantages

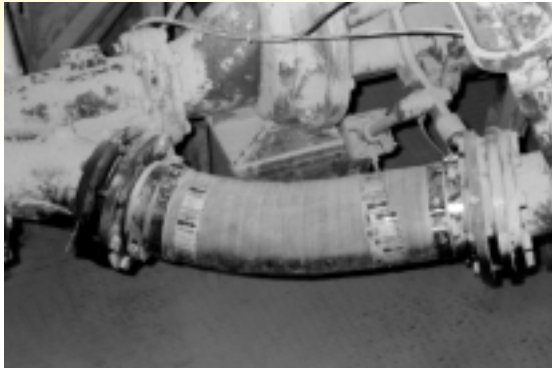
#### offered by KALFLEX:

- flexibly adaptable
- highly wear resistant
- easy to install
- well suited for preventive storage
- extensive practical experience



## Flexible but Wear Resistant Bends:

# KALMETALL Ensures High Wear Resistance of KALFLEX Bends



### KALMETALL - hard cast alloys

The term KALMETALL covers different special hard cast alloys which are highlighted by outstanding resistance against wear caused by impact and sliding thanks to exactly matched alloying elements.

KALMETALL segments for KALFLEX bends are produced by casting. KALFLEX segments can be made from application optimized KALMETALL qualities tailored to the specific requirements.

Dia-meter	Total Length (mm)	Angel (Degree)	Radius (mm)	No. of Segments	Segment Length (mm)	Weight (kg)
19	360	30	500	3	50	6,3
	510	60		6		7
	660	90		9		8,3
24	360	30	500	3	50	6
	510	60		6		7
	660	90		9		8
32	498	30	680	3	70	8,7
	708	60		6		10,6
	918	90		9		12,3
40	486	30	680	3	67	12,1
	687	60		6		15
	888	90		9		17,7
50	566	30	800	3	94	19,4
	848	60		6		25,5
	1130	90		9		32
65	630	30	880	3	95	22,3
	915	60		6		28,1
	1200	90		9		33,5
80	630	30	880	3	95	25
	915	60		6		31,5
	1200	90		9		38
100	650	30	1000	3	95	34
	1030	60		7		43,5
	1410	90		11		52,1
125	785	30	1200	4	95	54
	1260	60		9		74
	1735	90		14		94
150	830	30	1400	4	107	59,5
	1472	60		10		89,9
	2114	90		16		120

**Ask Kalenborn for advice.**  
We offer materials and know how for efficient abrasion protection — even for flexible applications

**Kalenborn Kalprotect – Dr. Mauritz GmbH & Co. KG**  
Asbacher Str. 50, D-53560 Vettelschoss  
Phone +49(0) 26 45.18-0  
Fax +49(0) 26 45.18-180  
eMail kalenborn@kalenborn.de  
Internet www.kalenborn.de