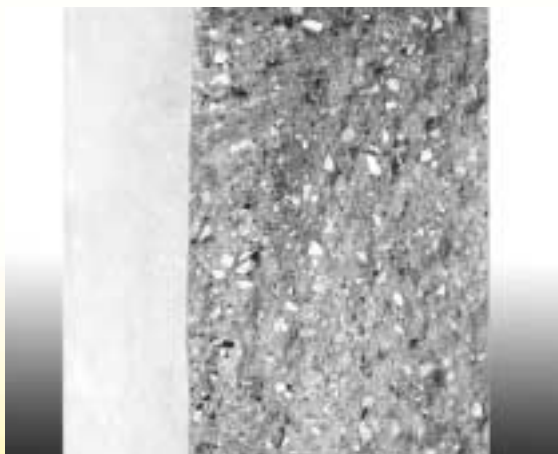


Highlighted by Minimum Installation Time ...

KALCRET-S can be Sprayed and is Hard, Abrasion Resistant and Quickly Applied



Kalenborn Spray Technology.



Homogenous structure.

KALCRET hard compound has proved successful in practical testing in a variety of industrial applications. It is well known that KALCRET can be cast or trowelled. Furthermore, prefabricated elements and prefabricated pipe bends – even of asymmetric configuration – are offered.

KALCRET-S is new, with a spraying technique that allows KALCRET to be applied over large surfaces in a minimum amount of time. Spraying may be done horizontally and vertically. The sprayed-on KALCRET can be reworked to attain an extremely smooth surface.

Technical Data

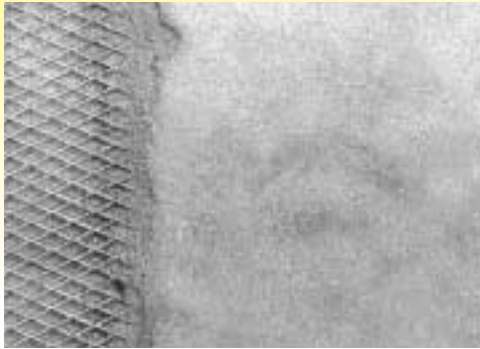
Hard aggregate	bauxite (B)
Particle size	0 ... 4 mm
Density	2,7 g/cm ³
Compressive strength	(28 days) 170 MPa
Bending tensile strength	(28 days) 22 MPa
Max. application temperature	400 °C (N) and/or 1200 °C (T)

Aggregate percentage 70 %

Advantages

- excellent wear protection compound
- excellent abrasion resistance according to ASTM
- homogeneous structure with little porosity
- smooth surfaces by re-working
- setting time only 24 hours

Particularly Suitable for Large Surfaces: Reliable Protection for Bunkers, Silos, Separators, Cyclones and Dust Collectors



Attachment by means of wire mesh.



Kalenborn Spray System.



Smooth surface.

Preparing the Job

- working temperatures between 5 and 30 °C
- attachment by means of wire mesh or fixing anchors
- fixing points spaced 250 mm
- steel surfaces shall be mechanically cleaned
- sandblasting not required
- concrete surfaces shall be free of forming oil and loose particles

Kalenborn Spray Technology

- spray system especially developed for installing KALCRET-S
- continuous and homogeneous delivery of the KALCRET-S compound up to the spray nozzle
- high-pressure water dosing and injection developed for Kalenborn to warrant optimal wetting of KALCRET-S
- addition of steel fibers immediately before spraying
- spraying system made available in installation containers

Working of KALCRET-S

- short installation time due to high application rate > 5 m²/h
- homogeneous, intensely compacted sprayed-on layer free of joints
- layer thickness 20 ...100 mm
- surface to be smoothed immediately after spraying
- material spillage approx. 20 %
- 75 % of final strength reached as early as 24 hours after installation
- working distance 800 to 1200 mm
- conveying distance of spraying compound longer than 50 m from the spraying machine
- even suitable for complicated geometries and large surfaces
- heating-up curves shall be duly observed

All above data depend on the specific application circumstances.

Kalenborn Kalprotect

Phone +49(0) 26 45.18-0
Fax +49(0) 26 45.18-112/180 (Export)

eMail kalenborn@kalenborn.de
Internet www.kalenborn.de